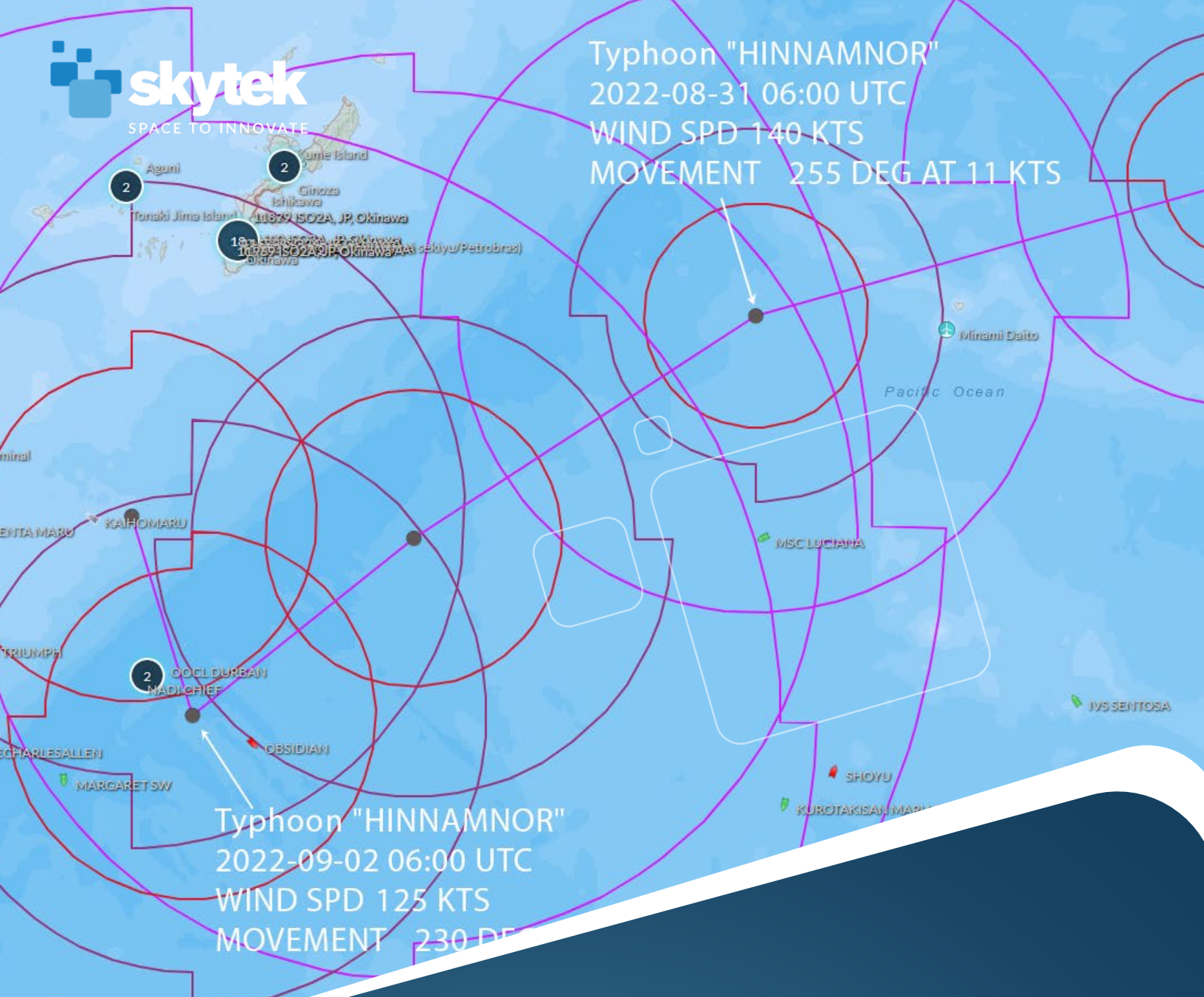


Typhoon "HINNAMNOR"  
2022-08-31 06:00 UTC  
WIND SPD 140 KTS  
MOVEMENT 255 DEG AT 11 KTS



Typhoon "HINNAMNOR"  
2022-09-02 06:00 UTC  
WIND SPD 125 KTS  
MOVEMENT 230 DEG AT 11 KTS

# TYPHOON HINNAMNOR

## Severe Weather Report

Report issued by Skytek: at 12:00 GMT on August 29<sup>th</sup> 2022

## SUMMARY

HINNAMNOR formed as a Tropical Cyclone on August 27<sup>th</sup> in the Pacific Ocean, and has intensified into a Category Two Typhoon on August 29<sup>th</sup>. Joint Typhoon Warning Center (JWTC) forecasts a rapid intensifying to a Category Four Typhoon in the next 36 hours as it heads towards Taiwan but expected to veer near Japanese island of Naha.

## TYPHOON HINNAMNOR, OVERVIEW, AUGUST 29<sup>TH</sup>, 2022

Skytek's analytics platform counts more than 4,5k marine assets (merchant ships, inland traffic, offshore platforms) in the cone of the typhoon, which are further narrowed down into a more granular view; Skytek platform counting inside the 50knots winds area the following exposed assets:

### MERCHANT SHIPS

---

In danger zone of the Typhoon (50 knots winds and more), Skytek captures 106 blue water ships: 53 Bulk Carriers, 19 Tanker ships, 10 Container ships and 24 General Cargo ships, whose hull value is modelled by Skytek platform to a currently estimated market value \$1,214 million.

### ENERGY OFFSHORE

---

30 renewable, energy offshore and support assets: 11 windfarms, 2 Drilling Rigs, 2 Jack-up Support Platforms, 3 Shuttle Tankers and 12 offshore support vessels, whose value is modelled by Skytek to a currently estimated market value of \$352 million.

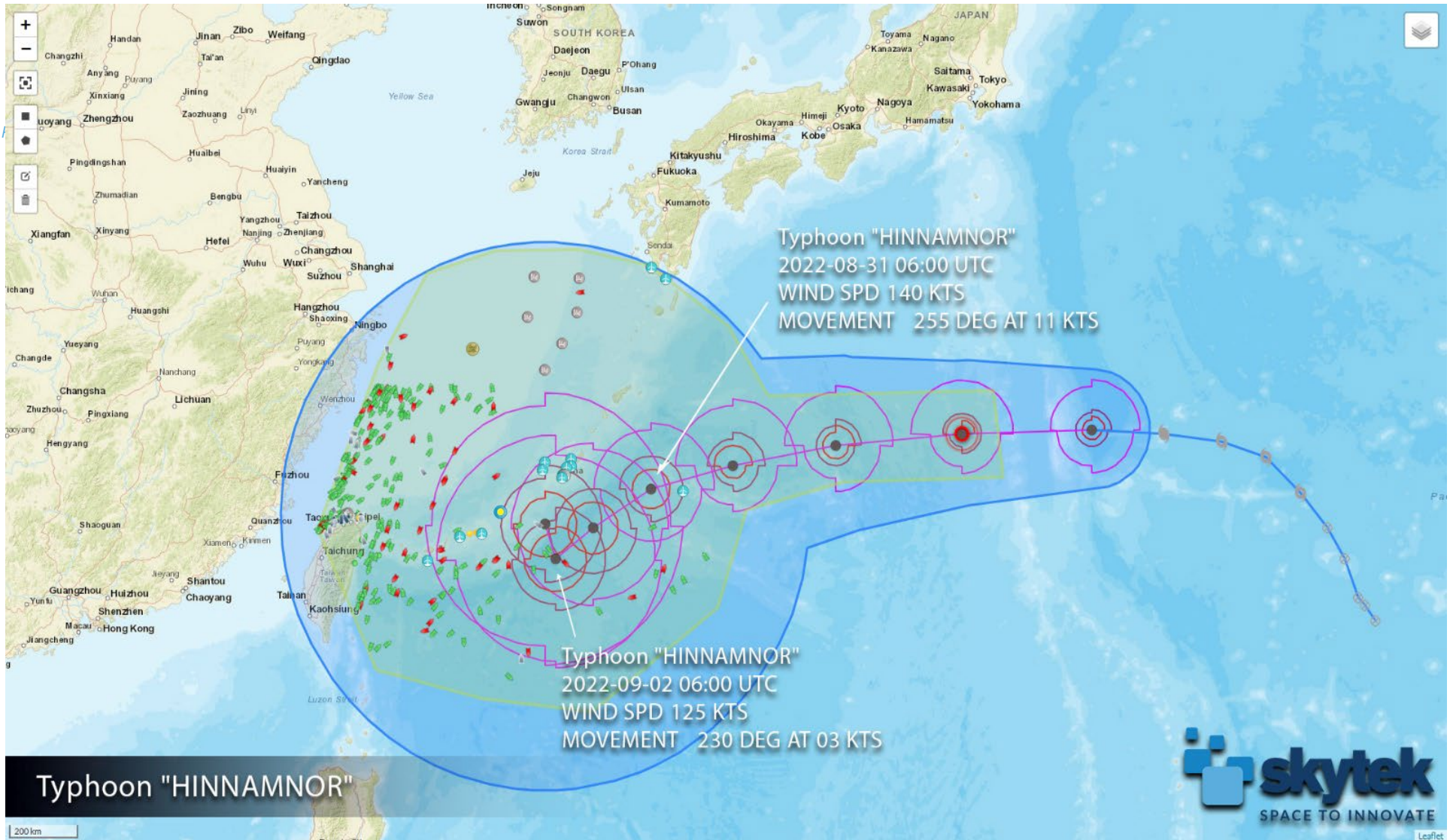


Figure 1 – Typhoon Hinnamnor, overview of marine assets in the cone, August 29<sup>th</sup> 2022



Combining geolocation, satellite imagery and big data, underwriters and brokers can work smarter and faster by shining a spotlight on any region of the world.

With real-time information at your fingertips, REACT humanises data by creating accurate insights and actionable data that support you, your team, and your business to make more profitable decisions.

Skytek's REACT transforms Insurance by applying space technology to today's real-world challenges. As an award-winning partner of the European Space Agency (ESA) and NASA, Skytek's innovation is at the heart of our people and values.



**satellite club**  
powered by Skytek

To receive the latest update reports, [SUBSCRIBE HERE](#)

For more information about Skytek REACT, visit [www.skytek.com](http://www.skytek.com)